



MSS®-TABNAK Stoneshine

Stone impregnation (Granite, Naturel Stones)

Features

MSS-Tabnak Stoneshine is colourless, clear, free of aromatic hydrocarbons and ready to use. It can be easily applied, penetrates into the pores and capillaries of the stone, dries rapidly and is tread-proof. Depending on the absorbency of the stone, 1-4 applications are necessary. While drying, the stone becomes repellent to water and grease. After 48 hours Impran is completely dry and durable. MSS-Tabnak Stoneshine does not affect the transpiration of the stone. Treated floors keep their original appearance, are protected for a long time, tread-proof and if inside, are particularly easy to care for. During wet mopping or cleaning with a scrubber drier, the water drips off the surface; this effect will be eliminated by the application of cleaning agents containing surfactants. Normal dirt such as grease, oil and paint cannot penetrate into the stone and can therefore be easily removed. MSS-Tabnak Stoneshine is resistant to alkali and ultraviolet. The impregnation does not discolour, thus it is also suitable for outdoors. It reduces bleaching caused by salts, the formation of moss and algae, mould, damage caused by frost.

Ingredients

Impregnant, water insoluble solvents.

Applications

Inside: Newly laid floors and old, thoroughly cleaned ones, free of wax and grease, dry natural and artificial floors and floors in ceramics with a rough and absorbent surface such as granite, gneiss, marble, sandstone, agglomerate stone, square concrete stone, clinker brick, bricks, porcelain tiles, concrete.

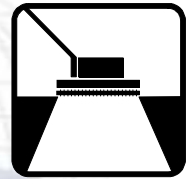
Outside: Terraces, walls out of the above mentioned materials, roofing tiles, walls in concrete, gravestones and paintings on the basis of chalk, cement and silicate.

Directions

Temperature of application +5°C up to +25°C. Tread-proof after 1 hour. The floor is completely durable after a drying time of max. 48 hours at +20°C and 65% of rel. humidity.

Apply MSS-Tabnak Stoneshine undiluted on the floor and distribute it immediately in a thin layer with a mop. Depending on the absorbency of the floor, 1-4 applications of intervals of 30 min. are necessary. Remove excess of Impran which is not absorbed after 15 min. with a floor squeegee. Distribute any residue with a dry mop. The spray-method is allowed only outdoors.

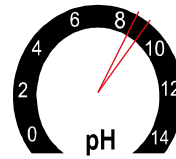
Floor Care



ISO 9001 : 2000
ISO 14001 : 2004
ISO 22000
HACCP / TS 13001
OHSAS 18001 / TS 18001



Sağlık Bakanlığı onaylıdır
TSE (TSEK)
Standartlarına göre üretilmiştir.



CLEANINGCOLOUR CODE



XN: Harmful

R 10 Inflammable.
R 65 Harmful, may cause lung damage if swallowed.
S 24 Avoid contact with skin.
S 43 Use powder in order to extinguish, do not use water.
S 51 Use only in well ventilated areas.

S 62 If swallowed do not induce vomiting; seek medical advice immediately and show this container or label.

Product Code: MSS16013

Packaging: 2,5 L (1,90 KG)

Consumption per square metre: Impregnation: 5 – 500 ml depending on the absorbency.

Adress: Ferhatpaşa Mahallesi Anadolu Caddesi No 14 Samandra İstanbul

Phone: 0090 216 660 08 98

Fax: 0090 216 660 08 99

E – Mail: info@mssgrup.com